



ARTFORMA

Instruction / installation manual
of **Decor** Mirror



Thank you for buying our product. All our products are made with particular attention paid to each detail and subjected to multiple tests. We are sure that you made a purchase that will serve you for many years.

NECESSARY TOOLS

- A pencil
- A measuring tape or a ruler
- A level
- A wall plug (included)
- L-bolts (montage hooks included)
- You will also need one person for help.
- A drill and a screwdriver
- A drill bit 6 mm



Read the instructions carefully before proceeding with the installation.
Failure to follow the instructions may result in the refusal to accept the complaint.



SECURITY



Fire hazard!

Long use of a LED band can make it very hot. It is forbidden to keep easily inflammable items nearby. Mirrors with illumination may be mounted only on a flame-resistant or incombustible surface.



Burn hazard!

Do not touch the lighting, since it can be very hot.



Carefully glass!

While mounting, pay attention to corners of the mirror that are particularly exposed to mechanical damage.



Crumbling!

Depending on the size of the mirror, it can be very heavy. Two persons should execute the wall mount.



High tension !

Electrical installation should be connected by an electrician.



PREPARATION FOR MONTAGE



Do not place the mirror on a hard surface, since it can damage the product.

- **Do not suspend the mirror on lighting profiles.**
 - **Do not suspend the mirror on pieces of furniture.**
 - **Do not suspend the mirror on the ceiling.**
 - **If adhesive hangers are sent separately, do not stick them to the heat mat of the mirror.**
1. First, open the package. Remember not to place the mirror on a hard surface as this may damage the product.
 2. Check if the package contains all the elements (product received according to the order, assembly elements).
 3. Then take the mirror out of the packaging and place it on a soft surface (you can use a folded towel for this).
 4. Make sure the product doesn't have any scratches or damages.
 5. Pay special attention to the corners of the mirror, check them first by removing the protections. If necessary, contact us, do not mount the item with any damage.
 6. For the assembly, secure the corners with the provided protectors again, remove them only after hanging the mirror on the wall.



Correct



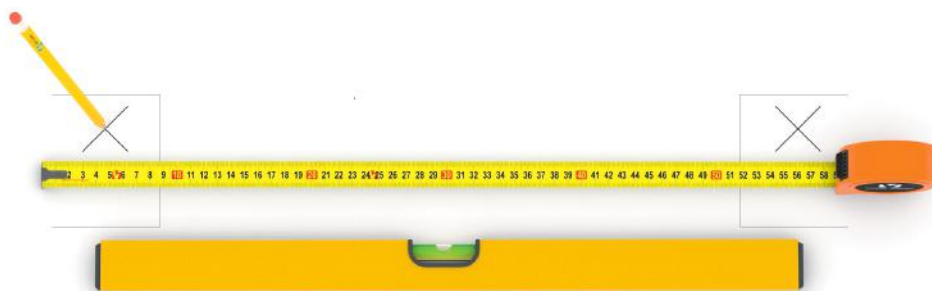
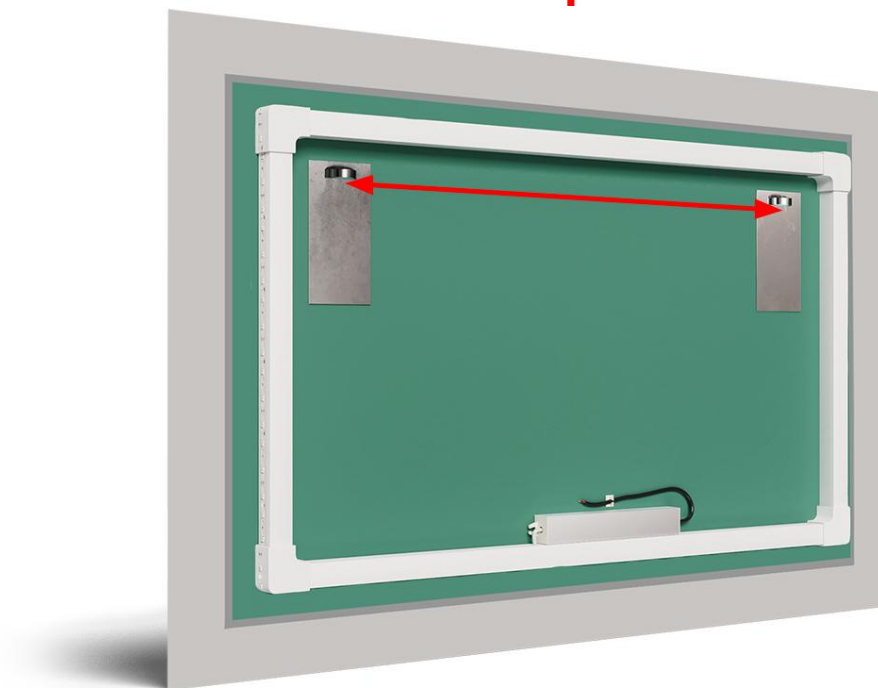
Incorrect



INSTRUCTION FOR MOUNTING ON THE WALL

1. In order to determine the place for mounting on the wall, measure the distance between two adhesive hangers stuck to the mirror.
2. Use these measurements to mark two points on the wall that will serve you to drill holes.
3. Make sure that the distances between adhesive hangers on the mirror and points marked on the wall are the same.
4. Check whether there are no pipes or electrical cables in places that has been marked to make holes there.

4





INSTRUCTION FOR MOUNTING ON THE WALL

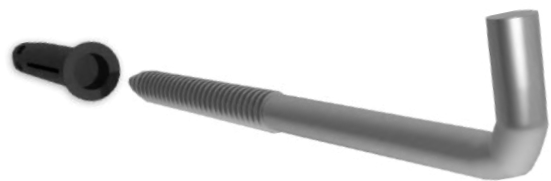
The following tools are necessary to make holes:

- A drill bit 6mm.
- A wall plug
- Bolts (L-hook).



5. If there are any pipes or electrical cables in the wall, find another place to mount the mirror. Drill holes in previously marked points in the wall.
6. Once you determine mounting places on the wall, drill holes there.

7. Place wall plugs in these holes



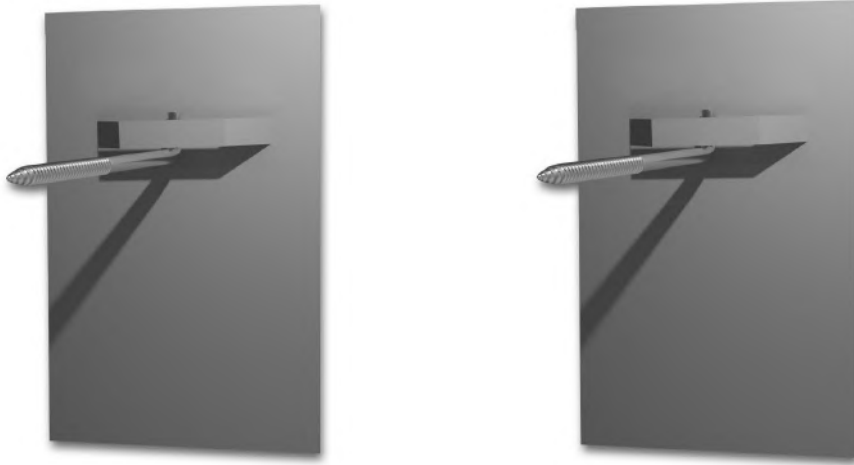
8. Then, screw L-hooks into the wall plugs. However, make sure that hooks are not tightened too firmly. Their function is to ensure an equal position of the mirror that should be placed at a distance of about 30 mm from the wall.

If you want to hang a mirror on a wall made of plasterboard (drywall), you should use wall plugs for this type of wall (molly studs, screw studs), not included in the set.



INSTRUCTION FOR MOUNTING ON THE WALL

9. In order to ensure that the mirror is fixed steadily, check whether L-hooks are properly mounted in eyelets of adhesive hangers.
10. Then suspend the mirror on L-hooks.



11. Once you suspend the mirror, remove protective film and plastic corners from its surface



**Make sure that electric power is disconnected
- disable the fuses!**

WARNING!

In order to connect it to the electrical grid, use "Wago" connector

However, do not forget to proceed according with the rules relating to work with electric installation or use help of an electrician.

GUIDELINES RELATING TO CLEANING AND MAINTENANCE

- If blurs remain on the glass after removing the protective film, use the included glue remover. You can eliminate any streaks with a glass cleaner.
- Use only agents intended for cleaning of glass surfaces and a dry microfibre cloth for everyday maintenance of the mirror.
- Avoid cleaning glass with silicone or acidic agents. Cleaning agents of such kind may damage surface of the glass and induce its corrosion in the future.



ARTFORMA

FORAM Sp. z o.o. sp. k.
Karpicko, ul. Jeziorna 3, 64-200 Wolsztyn

Mail EU: info@artforma.eu; Mail PL: biuro@artforma.eu
+48 68 422 73 65

We are at your disposal from Monday to Friday from 9am to 3pm.