



ARTFORMA



Operating and assembly instructions for  
the LED Illuminated Mirror Shelf





Thank you that you decided to buy our product. We made all our products taking care of each detail and we subject them to multiple tests. We are convinced that you made a purchase that will serve you for a long time.

## NECESSARY TOOLS

- A pencil
- A measuring tape or a ruler
- A level
- A wall plug included (8 mm)
- Montage hooks included
- Screw (Included)
- You will also need one person for help.
- Allen key (1 pc included)
- Wooden dowels (8 pcs included)
- A drill bit (8 mm)
- A drill and a screwdriver



**Read the instructions carefully before proceeding with the installation. Failure to follow the instructions may result in the refusal to accept the complaint.**





# SECURITY



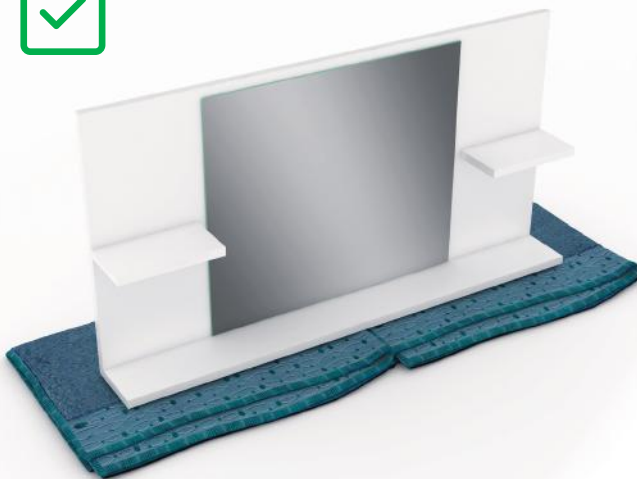
## Warning glass!

Place the mirror shelf on a soft surface only. Its corners are particularly susceptible to mechanical damage.

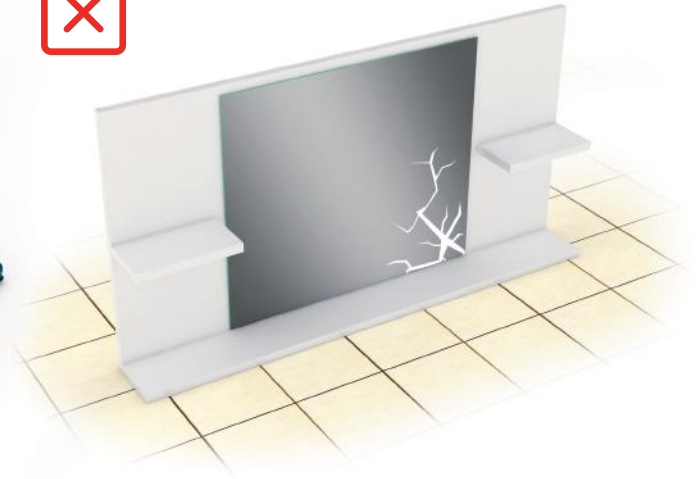


## Caution: fragile!

The shelf weighs between 20 and 30 kg.



Good



Wrong

## Attention!

- Do not hang the shelf on movable elements of interior furnishings.
- The wall on which you hang the shelf with a mirror should be made of durable material (e.g. concrete, brick, reinforced concrete, etc.). If you want to hang the product on a wall made of plasterboard, use wall plugs designed for these type of walls (Molly plugs, wall plugs). These are not included in the installation kit.
- Do not fix the shelf to the wall with mounting tape.





# SAFETY



## Fire hazard!

Prolonged use of LED strip may cause it to become very hot. Do not place flammable objects near it. Mirrors with lighting can only be mounted on a flame-retardant or non-flammable surface.



## Burn hazard!

Avoid touching the lighting as it may become very hot.



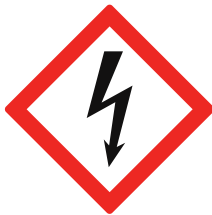
## Fragile glass. Handle with care!

Take care when handling the corners of the mirror during installation, as they are particularly vulnerable to mechanical damage.



## Risk of breakage!

Depending on the size of the mirror, it may be heavy. We recommend having two people assist with the mounting process.



## High voltage!

Electrical installation should only be carried out by a qualified electrician.



## Product usage risk!

Keep products out of reach of very young children (0-3 years). Children between 3 and 8 years old should not have access to the product unless supervised at all times.

Children over 8 years old, elderly individuals, and those with reduced physical, sensory, or mental abilities may use the products only under supervision or if they have been trained on their safe use and understand the associated risks.



## Avoid Overloading!

Do not hang additional objects on the mirror. Adding extra weight could cause the mirror to fall.





# PREPARATION FOR INSTALLATION



**Do not place the LED mirror shelf on a hard surface because it may damage the product.**

1. First, open the package. Remember not to place the mirror on a hard surface as this may damage the product.
2. Check if the package contains all the elements (product received according to the order, assembly elements).
3. Then take the mirror out of the packaging and place it on a soft surface (you can use a folded towel for this).
4. Make sure the product does not have any scratches or damage. Pay particular attention to the corners, check them first by removing the protections. If necessary, contact us, do not install the item with possible damage.

## Content:

1. Mounting hook "L" 2 pcs.
2. Wooden dowel 8pcs
3. Screw 8 pcs

4. Allen key 1pc
5. Main board 1pc
6. Small shelf 2pcs

7. Large shelf 1pcs.







# LED SHELF ASSEMBLY INSTRUCTION

1. Insert the wooden pegs into the holes on the main board.  
Remember to push them to the middle of their length.







# LED SHELF ASSEMBLY INSTRUCTION

2. Using the protruding pegs, connect the additional wooden plates to the main board.



3. Screw the screws into the remaining holes in the plate using the Allen key.





# LED SHELF ASSEMBLY INSTRUCTION

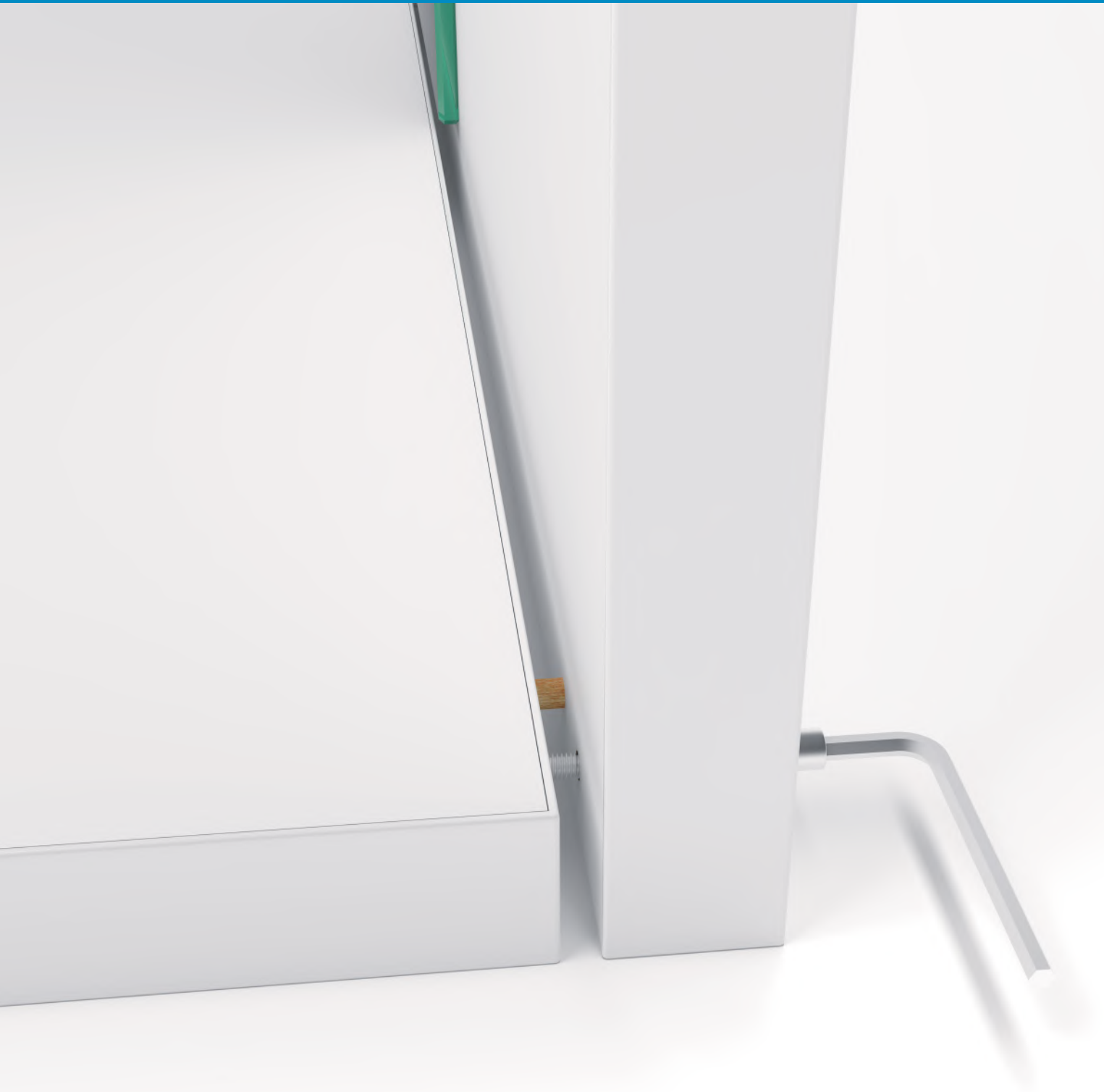


4. Then insert the wooden pegs.





# LED SHELF ASSEMBLY INSTRUCTION



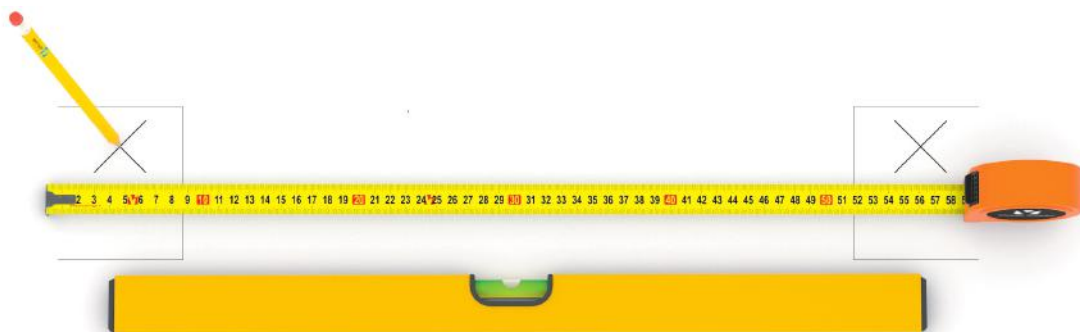
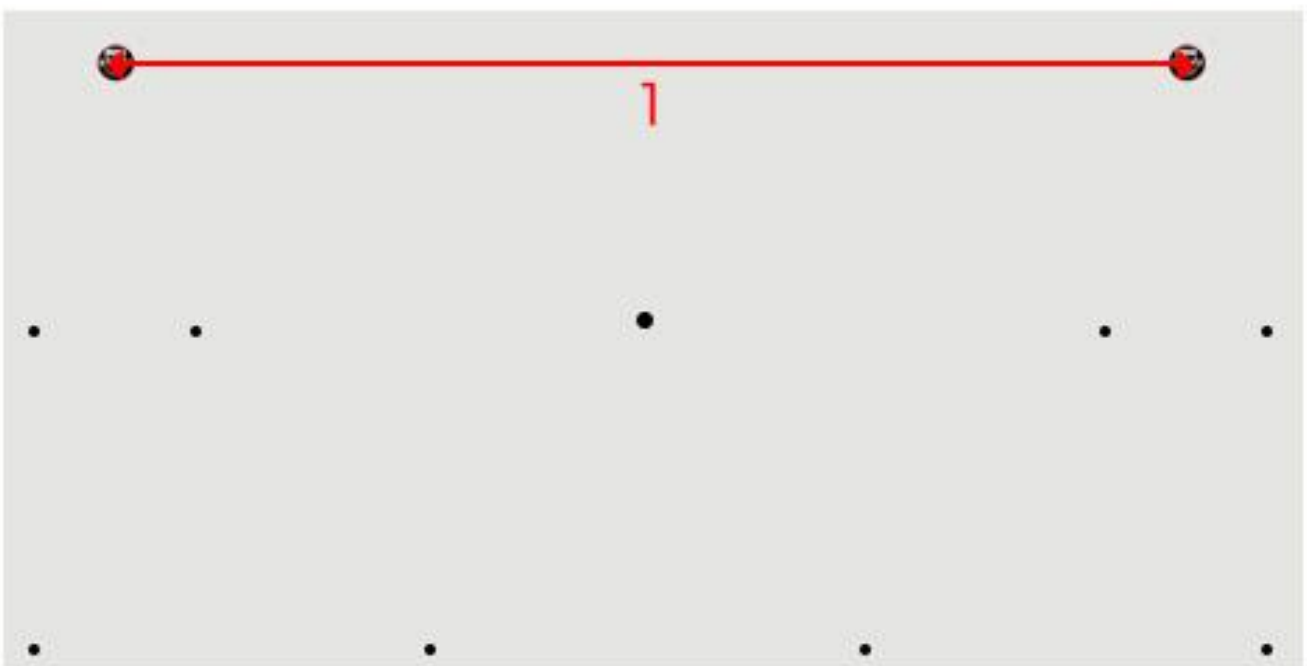
5. Then put the bottom plate on top of the main board.
6. To make the shelf stable, screw the unit together using screws.





# WALL MOUNTING INSTRUCTIONS:

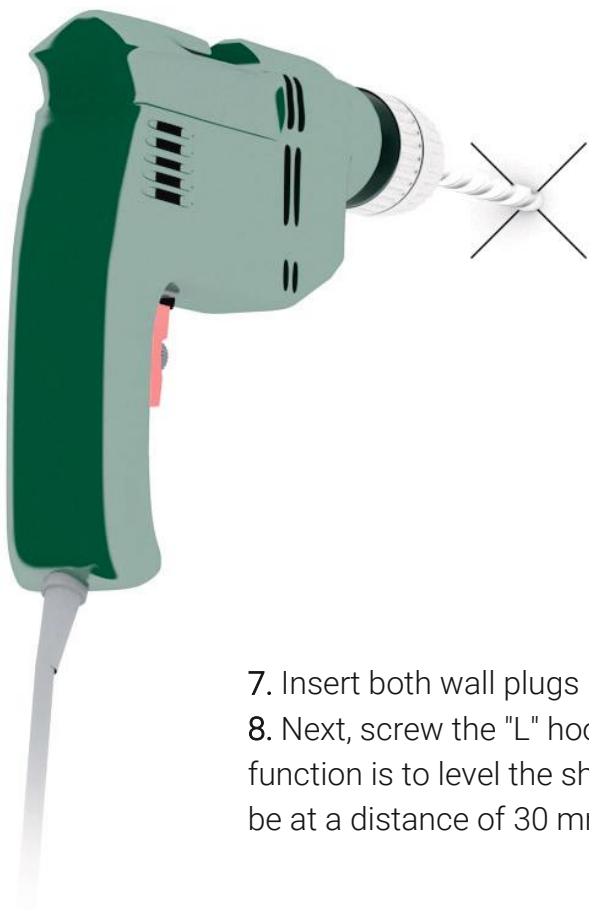
1. To determine where to mount it on the wall, start by measuring the distance between the two brackets attached to the shelf.
2. Using your measurements, mark the two points on the wall that will be used to drill the holes.
3. Make sure that the distance between the brackets on the shelf and the marks on the wall are the same.







# WALL MOUNTING INSTRUCTIONS:



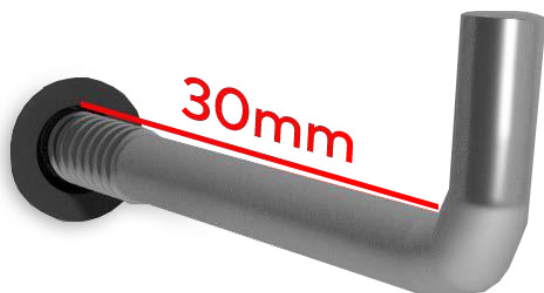
4. Check if there are installations in the wall in the places you have marked for holes.

5. If there are installations in the wall, mark other mounting locations.

6. When the installation locations have been determined, drill holes in them.

7. Insert both wall plugs into the holes.

8. Next, screw the "L" hooks into the wall plugs. Their function is to level the shelf, and the main board should be at a distance of 30 mm from the wall.



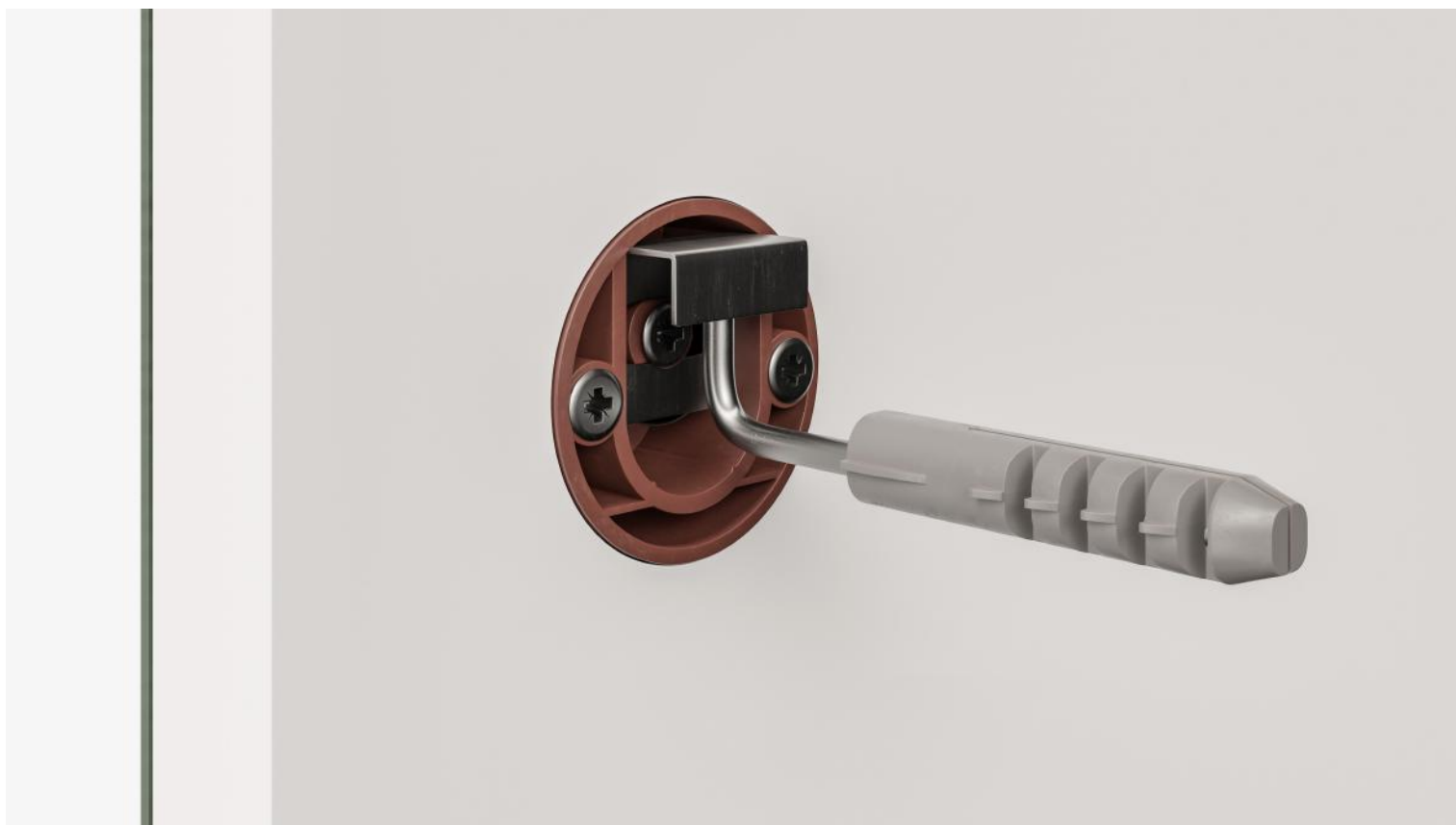
9. Make sure the "L" hooks are screwed in correctly to ensure the shelf is securely fixed.





## WALL MOUNTING INSTRUCTIONS:

10. Then hang the shelf on the hooks that were fixed earlier.



**Make sure the power supply is disconnected - turn off the fuses!**

**To connect the product to the mains, use a Wago type connector. Remember to follow the rules for working with electrical installations or seek the help of an electrician.**





# GUIDELINES RELATING TO CLEANING AND MAINTENANCE

- If blurs remain on the glass after removing the protective film, use the included glue remover. You can eliminate any streaks with a glass cleaner.
- Use only agents intended for cleaning of glass surfaces and a dry microfibre cloth for everyday maintenance of the mirror.
- Avoid cleaning glass with silicone or acidic agents. Cleaning agents of such kind may damage surface of the glass and induce its corrosion in the future.





# ARTFORMA

FORAM Sp. z o.o. sp. k.  
Karpicko, ul. Jeziorna 3, 64-200 Wolsztyn  
NIP 923-172-93-78, REGON 381749814

Mail EU: [hello@artforma.com](mailto:hello@artforma.com)  
+48 68 422 73 65

**We are at your disposal from Monday to Friday from 9am to 3pm.**