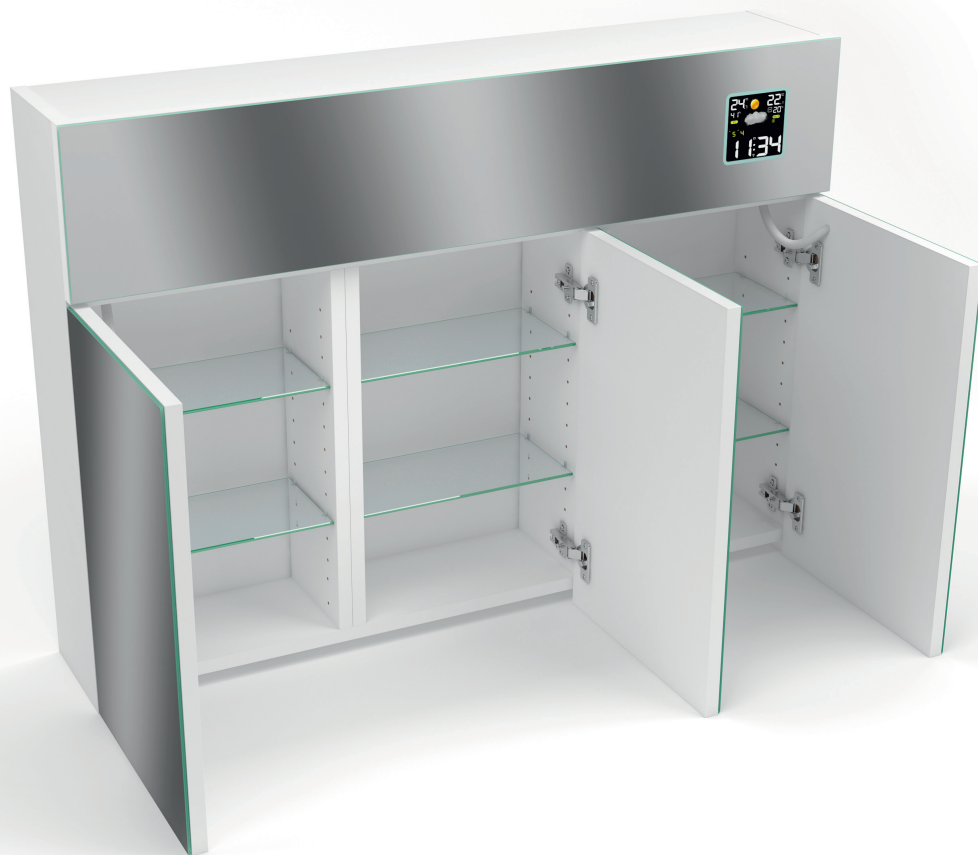


ARTFORMA



User Manual and Assembly Instruction of
„LED Illuminated Bathroom Cabinet“



Thank you that you decided to buy our product. We made all our products taking care of each detail and we subject them to multiple tests. We are convinced that you made a purchase that will serve you for a long time.

NECESSARY TOOLS

- A pencil.
- A concrete drill bit of 10 mm.
- A measuring tape or a ruler.
- A drill and a screwdriver.
- A level.
- A wall plug of 10 mm (2 pcs included).
- "L-shaped assembly hooks (2 pcs included).
- You may also need a person to help you



Before starting the assembly, please read the manual carefully.



SAFETY



Fire hazard!

Prolonged use of LED strip may cause it to become very hot. Do not place flammable objects near it. Mirrors with lighting can only be mounted on a flame-retardant or non-flammable surface.



Burn hazard!

Avoid touching the lighting as it may become very hot.



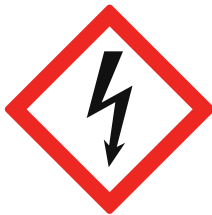
Fragile glass. Handle with care!

Take care when handling the corners of the mirror during installation, as they are particularly vulnerable to mechanical damage.



Risk of breakage!

Depending on the size of the mirror, it may be heavy. We recommend having two people assist with the mounting process.



High voltage!

Electrical installation should only be carried out by a qualified electrician.



Product usage risk!

Keep products out of reach of very young children (0-3 years). Children between 3 and 8 years old should not have access to the product unless supervised at all times.

Children over 8 years old, elderly individuals, and those with reduced physical, sensory, or mental abilities may use the products only under supervision or if they have been trained on their safe use and understand the associated risks.



Avoid Overloading!

Do not hang additional objects on the mirror. Adding extra weight could cause the mirror to fall.



PREPARATION FOR INSTALLATION



Remember not to place the illuminated cabinet on a hard surface, since it can cause a damage to the product.

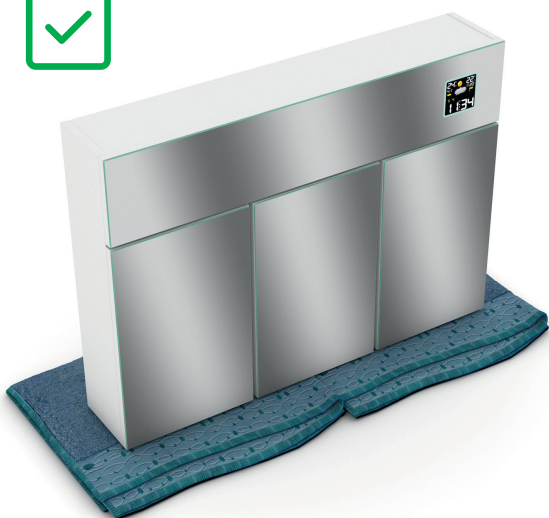
1. Open the packing first. Remember not to place the cabinet on a hard surface, since it can cause a damage to the product.
2. Then, take out all components from the packing and put them on a soft surface (you can use e.g. a folded towel for this purpose).
3. Check whether the packing contains all components according to the list at the bottom of the page.
4. Remove the protective film, remember however not to use metal tools for this purpose.
5. Make sure that the product does not bear any traces of scratches or damage.

Content:

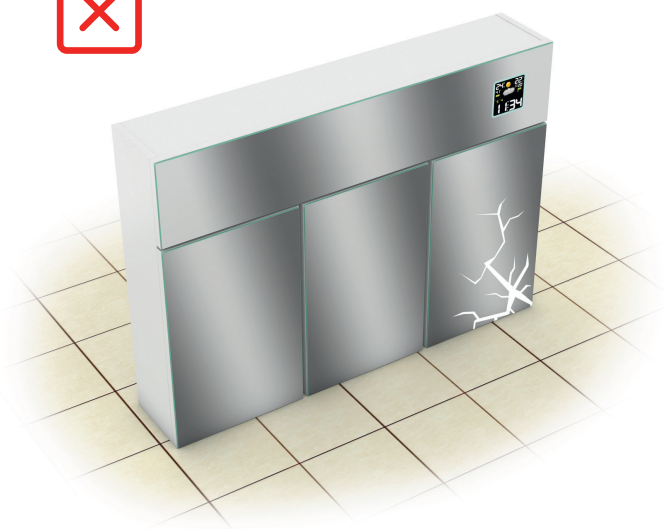
1. L-hook 2 pcs

2. Glass shelves
in the case of double door cabinet: 4 pcs
in the case of triple door cabinet: 6 pcs

3. Holders for the cabinet
in the case of double door cabinet: 16 pcs
in the case of double door cabinet: 24 pcs



Good

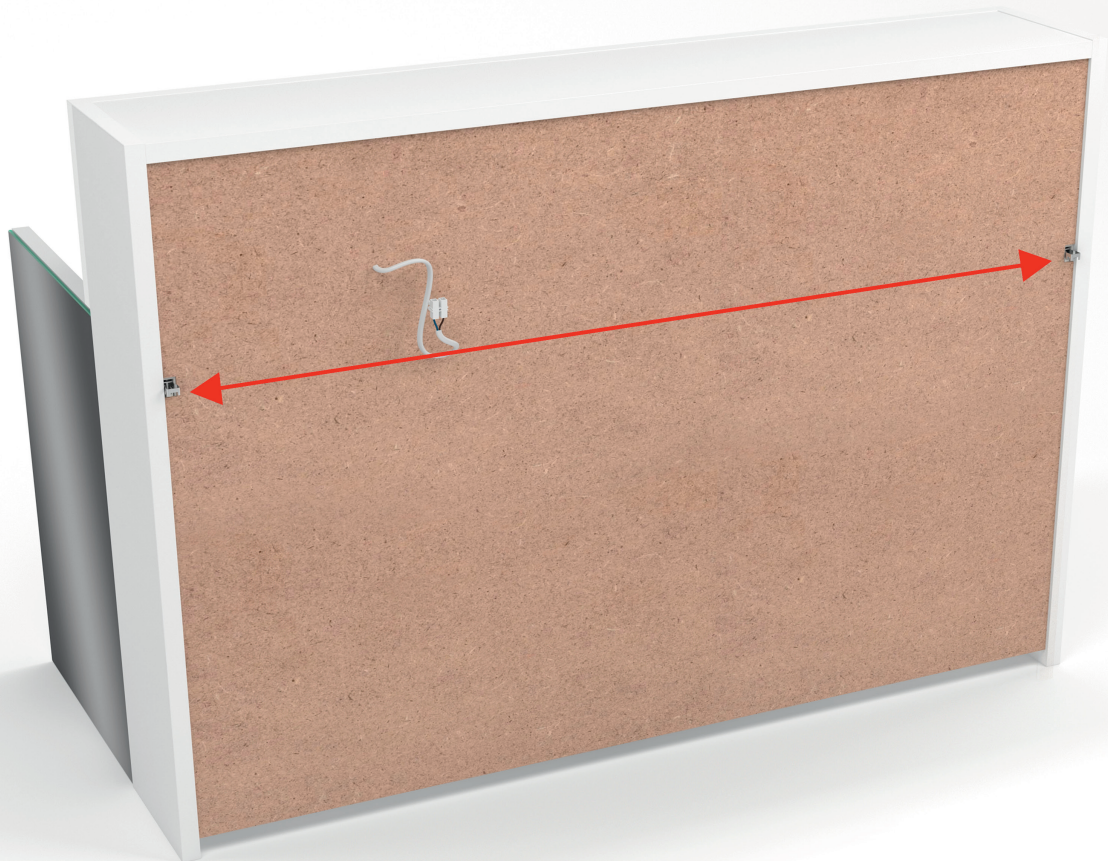


Wrong

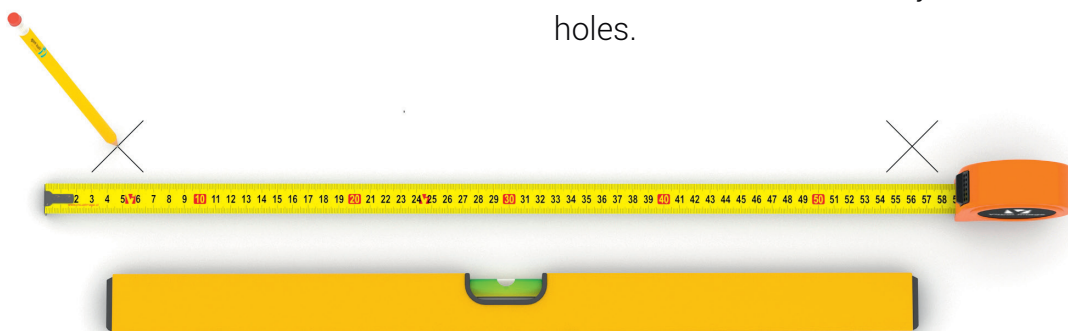


INSTRUCTION FOR MOUNTING ON THE WALL

1. In order to establish the mounting place on the wall, measure the distance between two holders fixed to the cabinet.



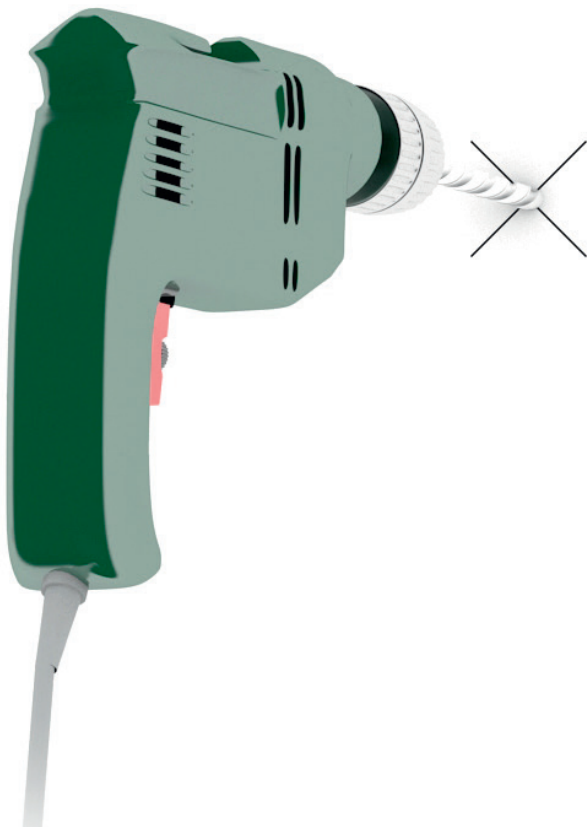
2. Using the measurements, mark two points on the wall that will serve you to drill the holes.





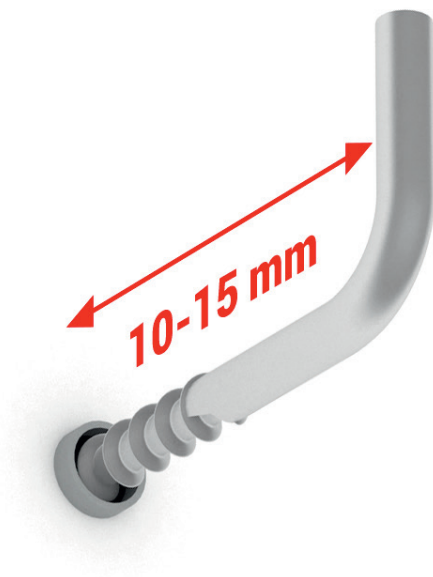
INSTRUCTION FOR MOUNTING ON THE WALL

3. Make sure that the distances between the holders on the cabinet and between the points marked on the wall are the same.



4. Check whether there is no installation in places that were determined to make holes there.
5. If there is any installation in the wall, choose another place for the mount.
6. Once you determine mounting places on the wall, drill holes there.

7. Put both wall plugs in the holes.
8. Then screw "L-hooks" in the wall plugs to the distance of 10-15 mm from the wall

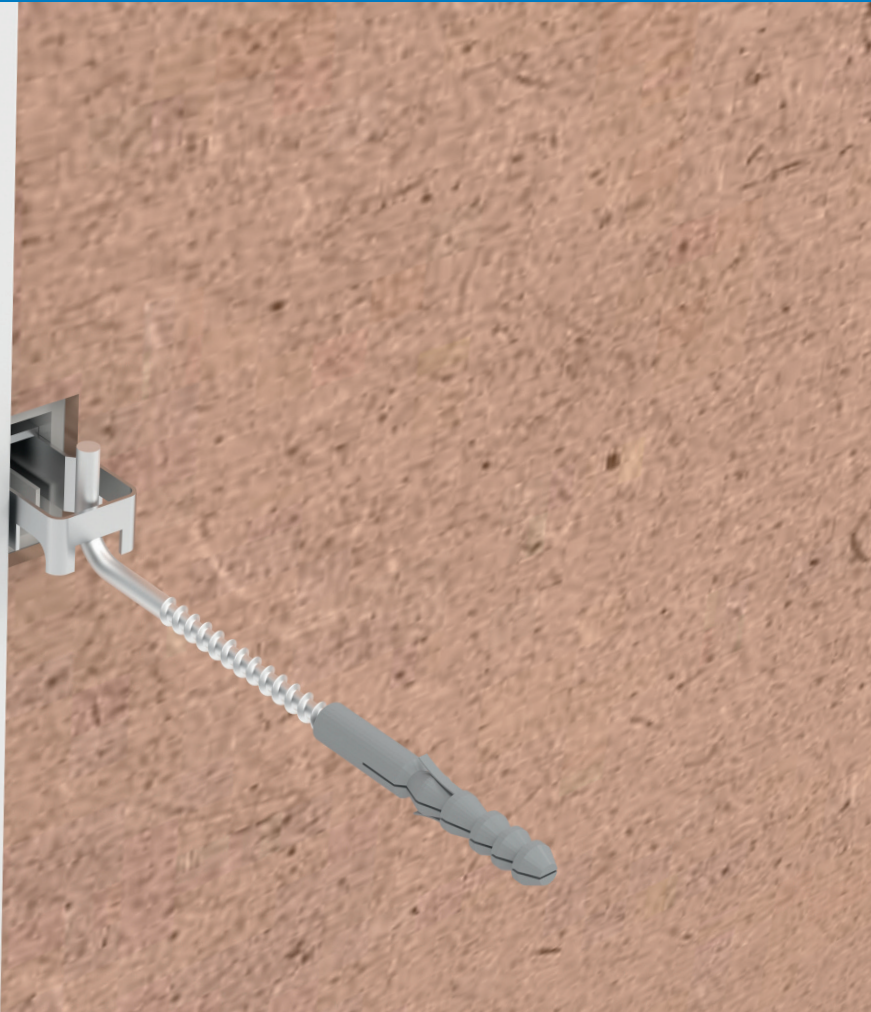


9. In order to ensure that the cabinet is fixed stably, make sure that L-hooks are properly screwed.



INSTRUCTION FOR MOUNTING ON THE WALL

- 10.** Then, hang the cabinet on previously mounted L-hooks.



- 11.** Eventually, connect the plug to the power supply.



INSTRUCTION FOR CLEANING AND MAINTENANCE

- If you would like to remove the glue from glass surface, use a solvent, acetone or a nail polish remover.
- For daily maintenance of the glass components, use only agents intended for this kind of material.
- Do not clean the glass with silicone or acid-based cleaning agents. Cleaning agents of this kind can damage the surface of the mirror and cause its corrosion in the future.



Technical data



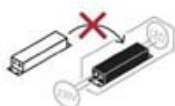
Before connecting the device to the mains, make sure that it conforms to the data given on the device's nameplate. The mirror may be connected only by a person with appropriate electrical qualifications.

The set does not include a terminal block.

The circuit to which the mirror is connected should be equipped with a residual current device (RCD).



- This product contains a light source with class G energy efficiency



- The light source is not replaceable.

- The separate control fixture is not replaceable.

Each cabinet has individual data located on the back on the product.
The ranges of each value are shown below.

TECHNICAL DATA

Npefm LED Illuminated Cabinet

Input voltage of the power supply: **110V | 230V AC**

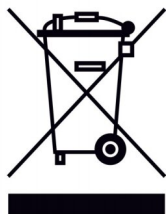
Output voltage of the power supply: **12V | 24V DC**

Rated power: **18W - 180W**

Degree of protection: **IP20**

Protection class: **1,2**

Manufacturer: **Foram Sp. z o.o. Sp. k.**



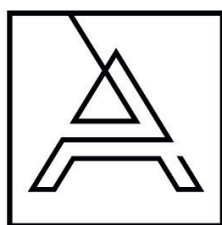
Proper disposal of electrical waste and electronic equipment

This device is marked in accordance with European Directive 2012/19/EU and the Polish Act on Waste Electrical and Electronic Equipment with the symbol of a crossed-out waste container.

This marking indicates that this equipment, after its useful life, must not be placed together with other household waste. The user is obliged to hand it over to electrical waste and electronic equipment collectors. Electrical waste and electronic equipment collectors, including local collection points, stores and communal units set up an appropriate system allowing for such equipment to be returned.

Proper handling of electrical waste and electronic equipment contributes to avoiding consequences harmful to human health and the environment, resulting from the presence of hazardous components and the improper storage and handling of such equipment.

Information on how to disassemble end-of-life lighting on the website! artforma.com



ARTFORMA

FORAM Sp. z o.o. sp. k.
Karpicko, ul. Jeziorna 3, 64-200 Wolsztyn
NIP 923-172-93-78, REGON 381749814
Mail EU: hello@artforma.com
+48 68 422 73 65

We work from Monday to Friday from 9:00 AM to 3:00 PM